



GAT MONTHLY MEMBERSHIP PROGRESS REPORT

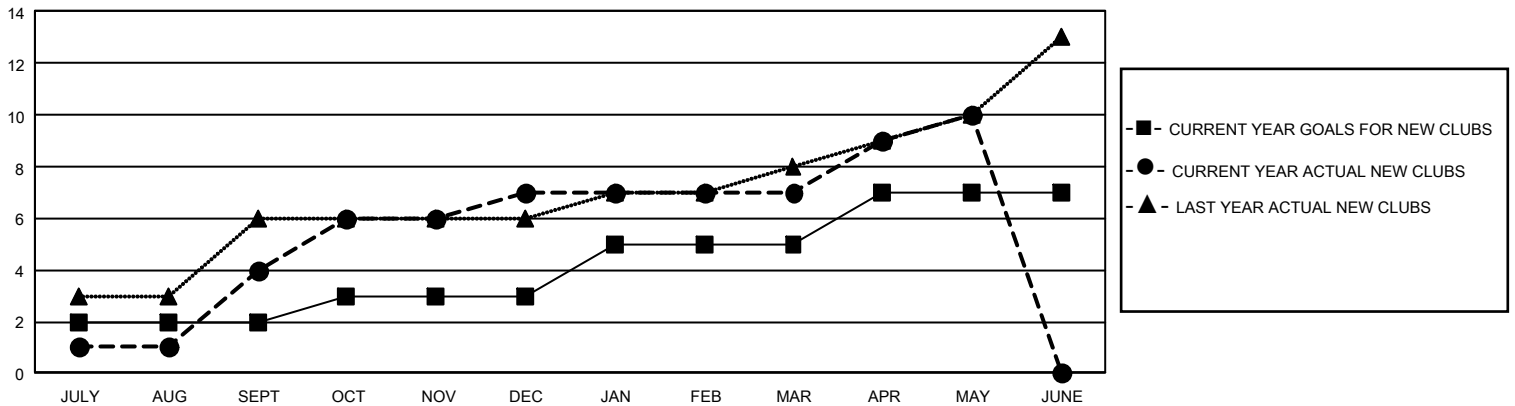
Results as of: 5/31/2025

GMT Constitutional Area 5 - E, Group P

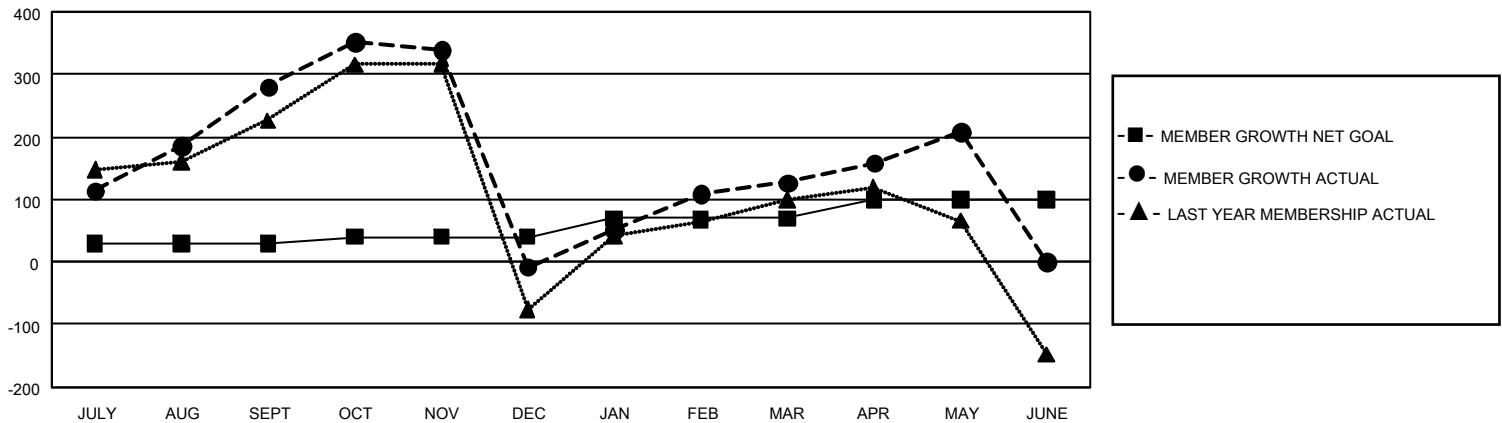
REPORT DOES NOT INCLUDE CLUBS IN UNDISTRICTED AREAS.

Clubs				Members			
RESULTS FOR 2024-2025				RESULTS FOR 2024-2025			
QUARTER	NEW CLUB GOAL	NEW CLUBS	DROPPED CLUBS	QUARTER	MEMBER GROWTH NET GOAL	MEMBER GROWTH ACTUAL	DROPPED MEMBERS ACTUAL (including transfers)
JULY/AUG/SEPT	6	4	1	JULY/AUG/SEPT	30	481	150
OCT/NOV/DEC	3	3	1	OCT/NOV/DEC	10	203	470
JAN/FEB/MAR	6	0	3	JAN/FEB/MAR	30	200	39
APR/MAY/JUNE	6	3	0	APR/MAY/JUNE	30	246	133

GOALS AND ACTUAL NEW CLUBS CUMULATIVE



GOALS AND ACTUAL MEMBERS CUMULATIVE



DROPPED CLUBS: 5

186 CLUBS OF 314 ADDED 1 OR MORE NEW MEMBERS

GENDER DISTRIBUTION

MALE	3,327 (46.43%)
FEMALE	3,838 (53.56%)
NON BINARY	0 (0.00%)
PREFER NOT TO ANSWER	1 (0.01%)

DROPPED MEMBERS

DECEASED	37
CLUB CANCELLED	12
OTHER	740
TOTAL	789

[CLICK HERE FOR CUMULATIVE MEMBERSHIP DATA](#)

TOTAL FAMILY UNIT MEMBERS	470
FAMILY MEMBERS PAYING HALF DUES	255